

INSTALLATION INSTRUCTIONS

SNAP 'L' LOW TOP COLLARS

PRODUCT

SNAP L40/50FWS
SNAP L100FWS + 65 Reducer Ring
SNAP L100FWS + 80 Reducer Ring
SNAP L100FWS

SNAP L40/50S
SNAP L100S + 65 Reducer Ring
SNAP L100S + 80 Reducer Ring
SNAP L100S

APPLICATION

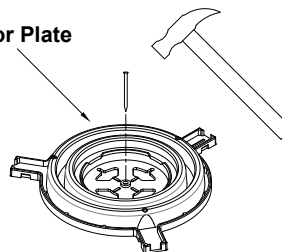
FWS - Floor waste and Shower
S - Stack only

IMPORTANT The intumescent sleeve must not be altered or tampered with.

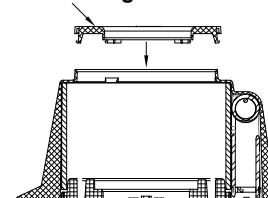
1

Mark the planned penetration centre point on the formwork. Use the windows (4b) of the locator plate (4) to position the central fixing hole (4a) over the centre of the mark. Secure the locator plate to the formwork using the central fixing hole. If required, insert a 65 or 80 Reducer Ring (6) (sold separately) into the top of an L100 Collar to reduce the aperture to suit smaller pipe diameters, or remove the 40 Reducer Ring (pre-installed) from the L40/50 Collar to increase the aperture for 50 diameter pipes.

Locator Plate



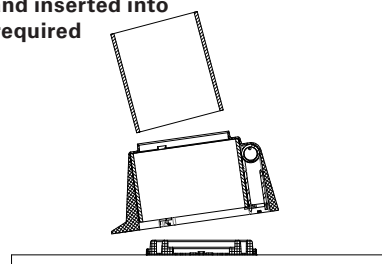
Reducer Ring



2

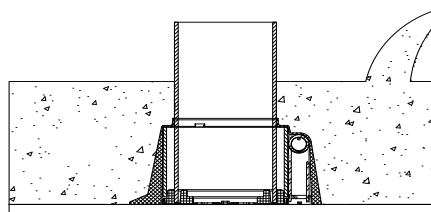
Inspect the collar to make sure it has not been damaged in transit and all components are present. Clip the collar onto the locator plate, ensuring the collar base flange (5) is flat on the formwork. Secure the collar to the formwork using preferred fixing points. Insert cut pipe section. Generally, black collars are for Floorwaste and Shower applications. White collars are for Stackwork only.

Pipe cut and inserted into collar as required



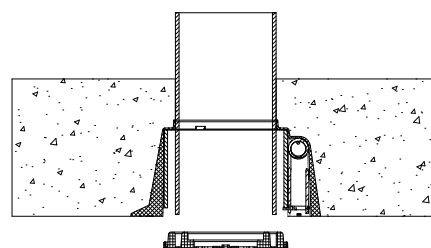
3

Pour concrete. Snap Collars are approved for use in concrete slabs of a range of thicknesses (see website: www.snapcollars.com.au for tested systems).



4

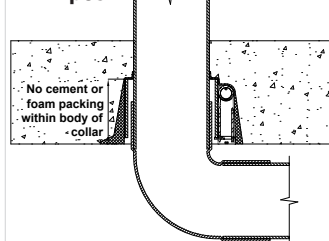
Remove the formwork. The locator plate will be pulled from the collar with the formwork, leaving a clean hole and the internal components of the collar fully exposed to the compartment underneath. Remove form pipe if required.



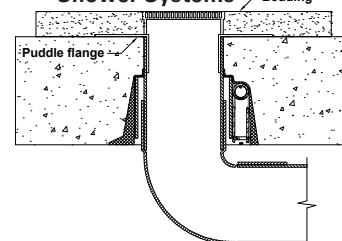
5

(i) Install the required pipe by sliding it through the collar, taking care not to damage the internal collar components.
(ii) Install the pipe and puddle flange as normal. Pour bedding onto the concrete.

(i) Stackwork Pipes



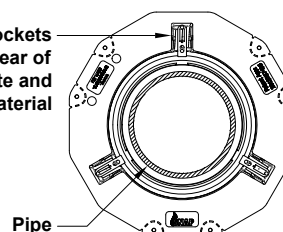
(ii) Floorwaste and Shower Systems



6

Inspect the collar to ensure no residual concrete remains in the Spring Pockets (2) around the fusible links and springs, and that there is no foreign material in the body of the collar. Ensure that the bottom of the collar is completely exposed to the compartment below.

Spring pockets clear of concrete and foreign material



Internal components entirely visible to compartment below

L100FWS pictured

INSTALLATION INSTRUCTIONS

SNAP 'L' LOW TOP COLLARS

PRODUCT

SNAP L40/50FWS

SNAP L100FWS + 65 Reducer Ring

SNAP L100FWS + 80 Reducer Ring

SNAP L100FWS

SNAP L40/50S

SNAP L100S + 65 Reducer Ring

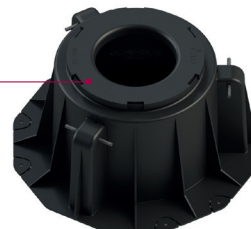
SNAP L100S + 80 Reducer Ring

SNAP L100S

APPLICATION

FWS - Floor waste and
Shower
S - Stack only

6 Reducer Ring



1 Collar casing

2 Spring Pocket

3 Intumescent lining

4 Locator Plate

5 Base Flange



Collar Lip seals
against pipe

Base flange prevents
concrete ingress

Grooved plate to
hold pipe in place

4a Central fixing hole

4b Alignment windows

L100FWS pictured