

INSTALLATION INSTRUCTIONS

SNAP 'MS' MULTI-SERVICES RETROFIT COLLAR

PRODUCT

SNAP MS70R

APPLICATION

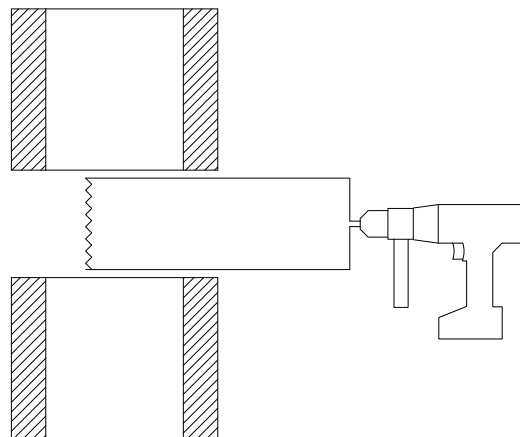
MS - Multiple Services



IMPORTANT The intumescent sleeve must not be altered or tampered with.

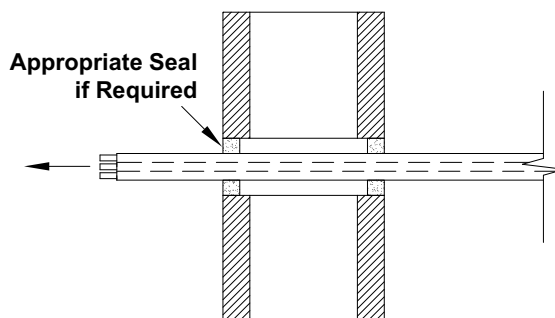
1

View approved collar/service/element systems on our website www.snapcollars.com.au. Mark the planned penetration centre point on the wall. Using an appropriate tool, cut a hole slightly larger than the planned services up to a maximum diameter of 70mm as required.



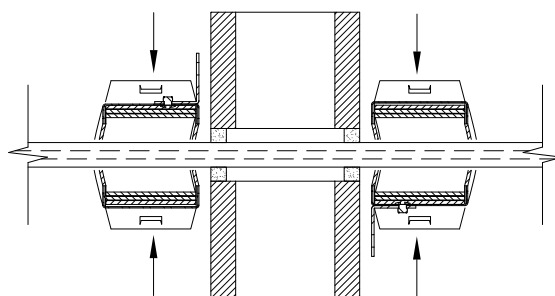
2

Install services through the wall. If required, seal the gap between the element and services with an appropriate fire-rated sealant. View tested systems on our website. www.snapcollars.com.au
N.B Do not put any sealant inside the collar.



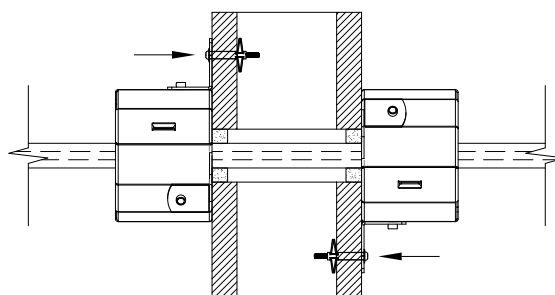
3

Inspect the collar to make sure it has not been damaged in transit and all components are present. Wrap the collar around the service and close, ensuring both clasps are engaged. Slide the collar to the wall



4

Fasten the collar to the wall using appropriate fixings through all circular holes in the base plate. Refer to Table 1 (overleaf) for appropriate fixing for collar/element systems.



INSTALLATION INSTRUCTIONS

SNAP 'MS' MULTI-SERVICES RETROFIT COLLAR

PRODUCT

SNAP MS70R

APPLICATION

MS - Multiple Services

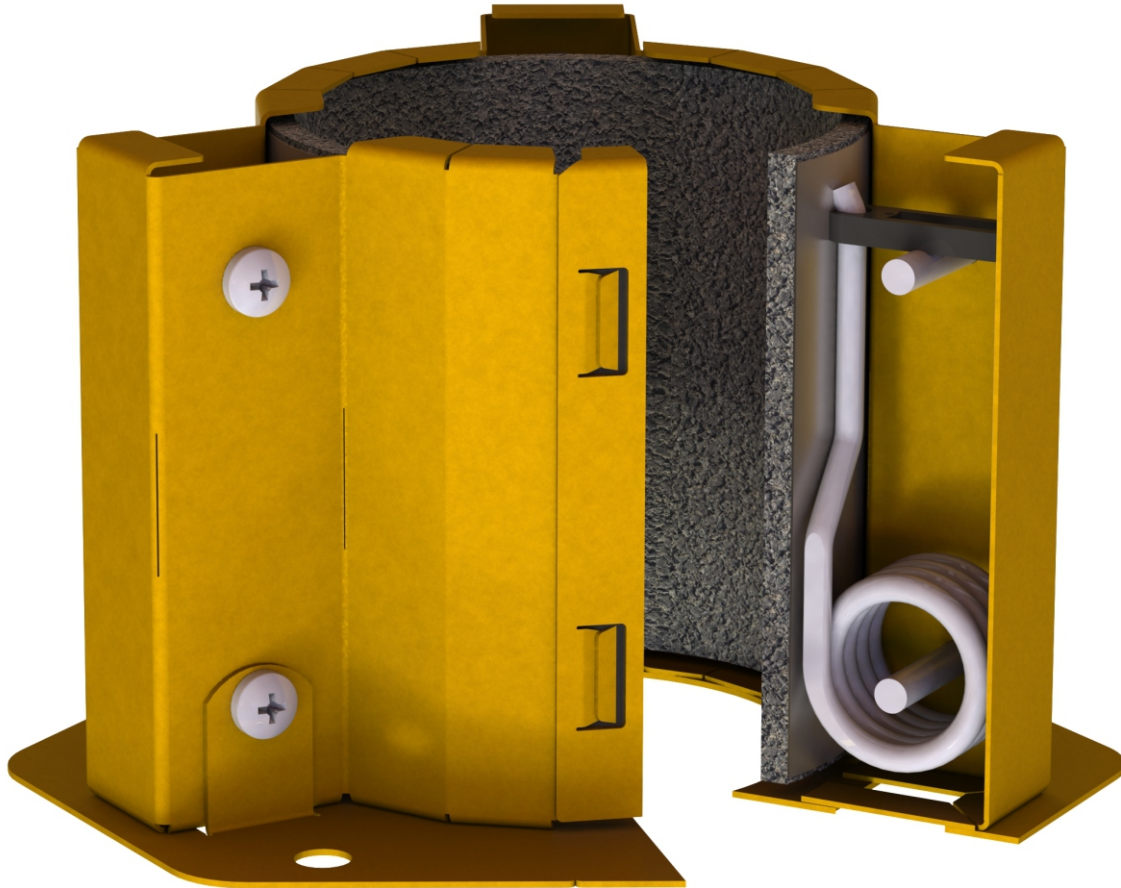


Table 1

Element	Fixing (minimum size)
13mm and 16mm Plasterboard lined wall	M4 Expandable Steel Anchors
10mm and greater FIRECRUNCH and Multiboard Board lined wall	M4 Expandable Steel Anchors
75mm Hebel PowerPanel wall	14-10 65mm Hex Head Screws
78mm SpeedPanel wall	14-10 65mm Hex Head Screws
Concrete or Masonry wall	5mm x 30mm Concrete Screw Bolts