



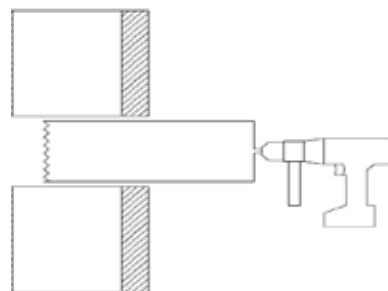
IMPORTANT The intumescent sleeve must not be altered or tampered with.

1

View approved collars/services/element systems on our website snapcollars.com.au.
Inspect the collar to make sure it has not been damaged in transit and all components are present.

2

Mark the planned penetration centre point on the wall or slab ("the element") and drill a 70mm (max) hole through the element.



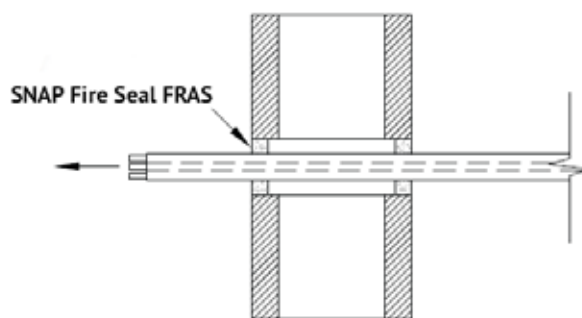
3

Install the services through the element.

If required, seal the services with SNAP Fire Seal FRAS, using the relevant report evidence.

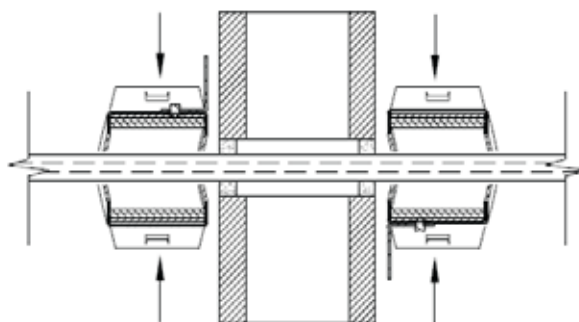
- For wall installations, seal the annular gap between the element and services either side of the wall.
- For slab installations, seal the annular gap between the element and services on the top side of the slab.

Note: Do not put any sealant inside the collar.



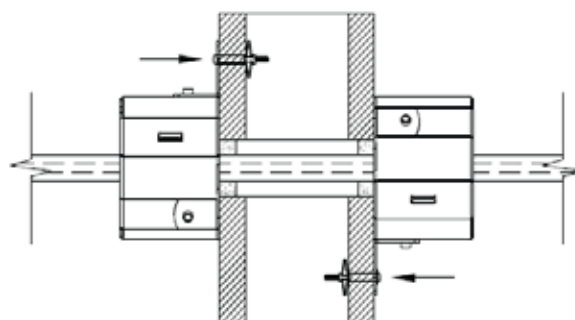
4

Wrap the collar around the services and close, ensuring both clasps are engaged. Slide the collar against the wall or underside of the slab.



5

Fasten the collar to the element using appropriate fixings through all circular holes in the base plate. Refer to Table 1 (overleaf) for the appropriate fixing.



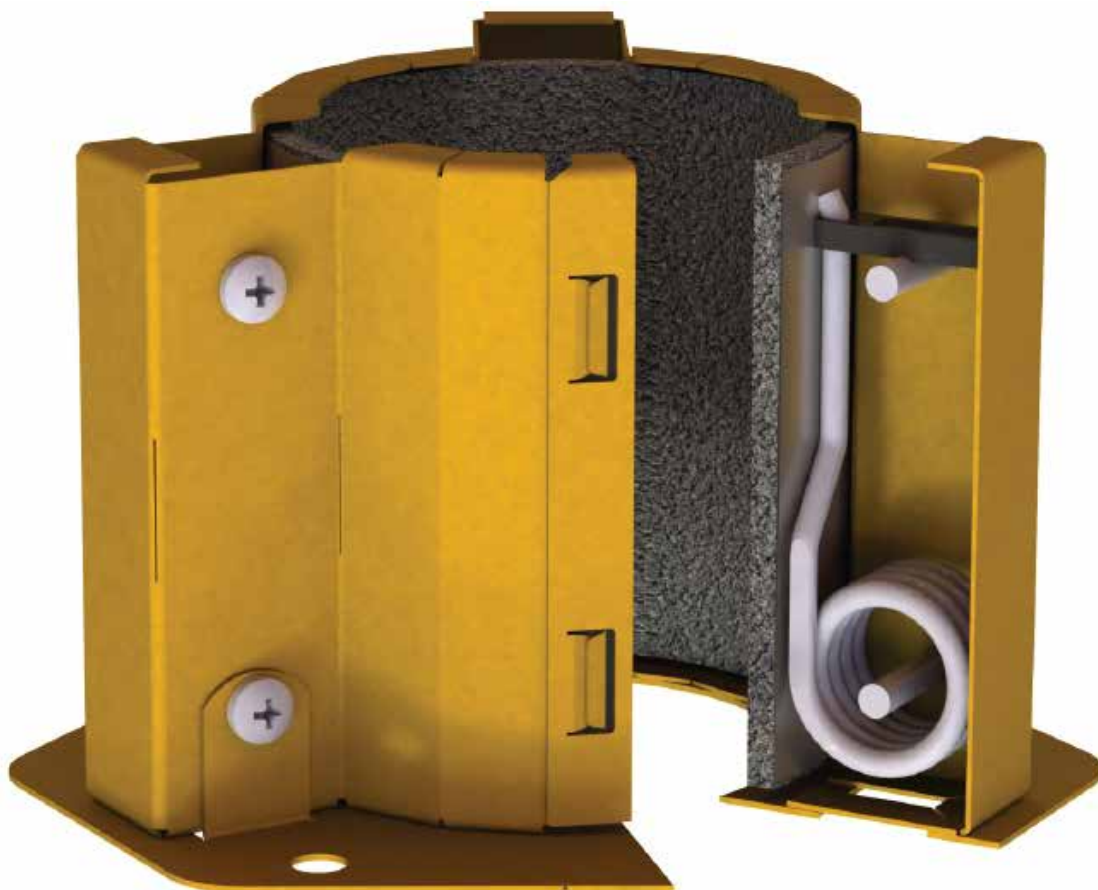


Table 1

Element	Fixing (minimum size)
13mm and 16mm Plasterboard lined wall	M4 16-23mm Steel Expandable Anchor
10mm and greater FIRECRUNCH and Multiboard Board lined wall	M4 16-23mm Steel Expandable Anchor
75mm Hebel PowerPanel wall	14g-10 65mm Hex Head Screw
78mm SpeedPanel wall	14g-10 65mm Hex Head Screw
Concrete or Masonry wall	5.0mm x 30mm Steel Concrete Screw Bolt
Concrete slab	5.0 x 30mm Steel Concrete Screw Bolt 5.0 x 32mm Steel Mushroom Head Spike 6.0 x 40mm Steel Wedge Anchor 6.5 x 40mm Steel Sleeve Anchor

INS-MSR-V2