



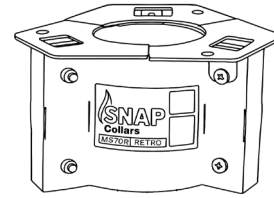
Wall

⚠ IMPORTANT The intumescent sleeve must not be altered or tampered with.

1

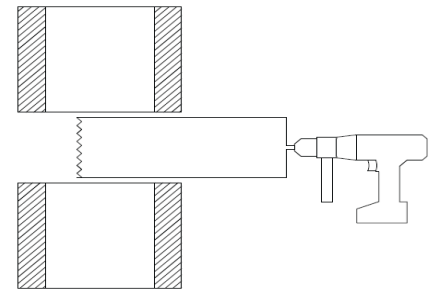
Verify that the intended use of the collar is supported by a compliant report. See snapcollars.com.au for compliant solution.

Inspect the collar to make sure it has not been damaged in transit and all components are present.



2

Mark the planned penetration centre point and make a 70mm (max) hole through the element.

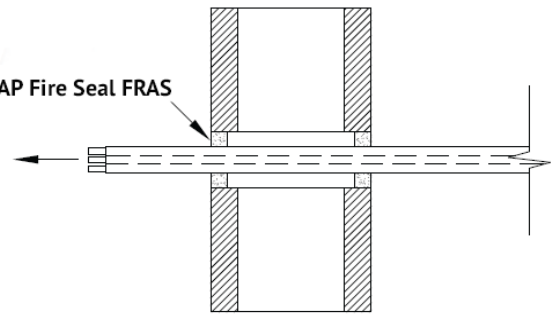


3

Install the services through the element. If required, seal the services with SNAP Fire Seal FRAS, using the relevant report evidence. Seal the annular gap between the element and services either side of the wall.

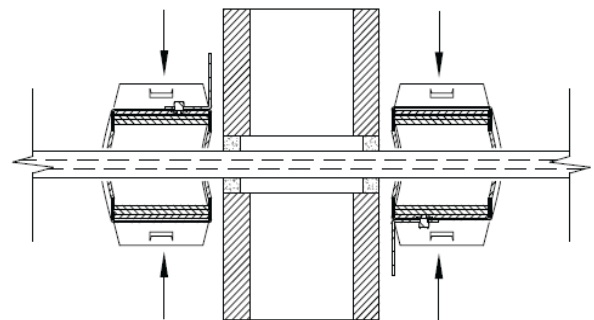
Note: Do not put any sealant inside the collar.

SNAP Fire Seal FRAS



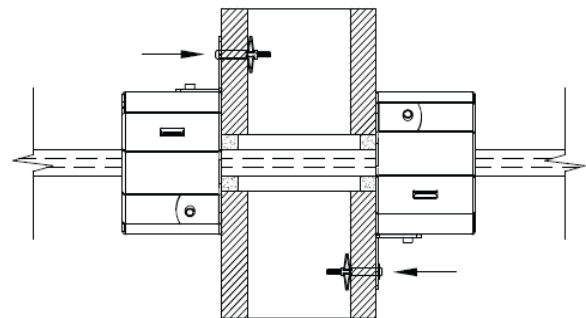
4

Close the collar around the services, ensuring both clasps are engaged. Slide the collar against the wall.



5

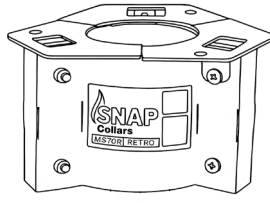
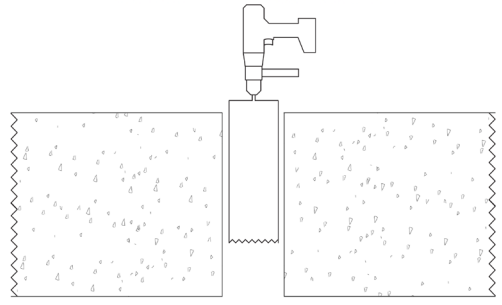
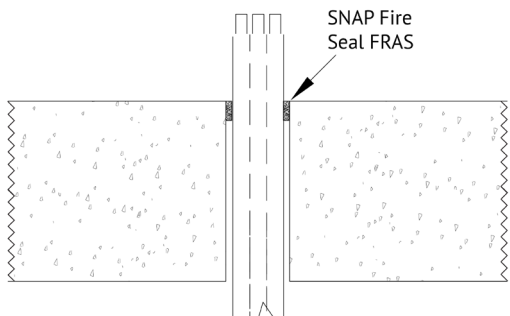
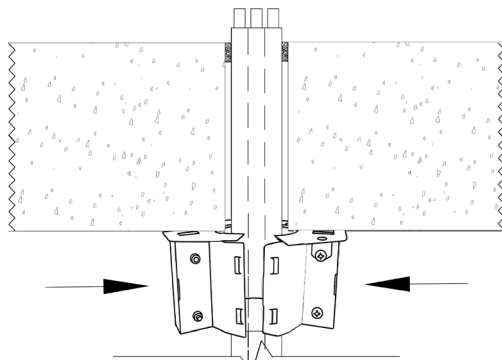
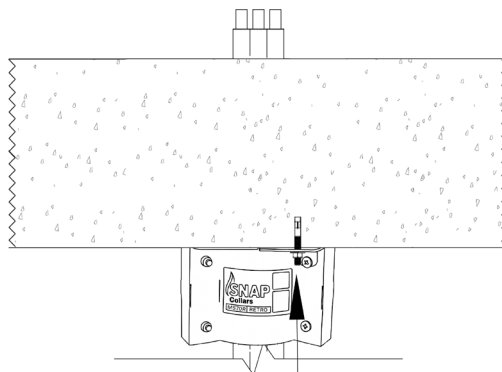
Fasten the collar to the element using appropriate fixings through all circular holes in the base plate. Refer to Table 1 (page 3) for the appropriate fixing.





Slab

⚠ IMPORTANT The intumescent sleeve must not be altered or tampered with.

1	<p>Verify that the intended use of the collar is supported by a compliant report. See snapcollars.com.au for compliant solution.</p> <p>Inspect the collar to make sure it has not been damaged in transit and all components are present.</p>	
2	<p>Mark the planned penetration centre point and make a 70mm (max) hole through the element.</p>	
3	<p>Install the services through the element. If required, seal the services with SNAP Fire Seal FRAS, using the relevant report evidence. Seal the annular gap between the element and services of the top side of the slab only.</p> <p>Note: Do not put any sealant inside the collar.</p>	
4	<p>Close the collar around the services, ensuring both clasps are engaged. Slide the collar against the underside of the slab.</p>	
5	<p>Fasten the collar to the element using appropriate fixings through all circular holes in the base plate. Refer to Table 1 (page 3) for the appropriate fixing.</p>	

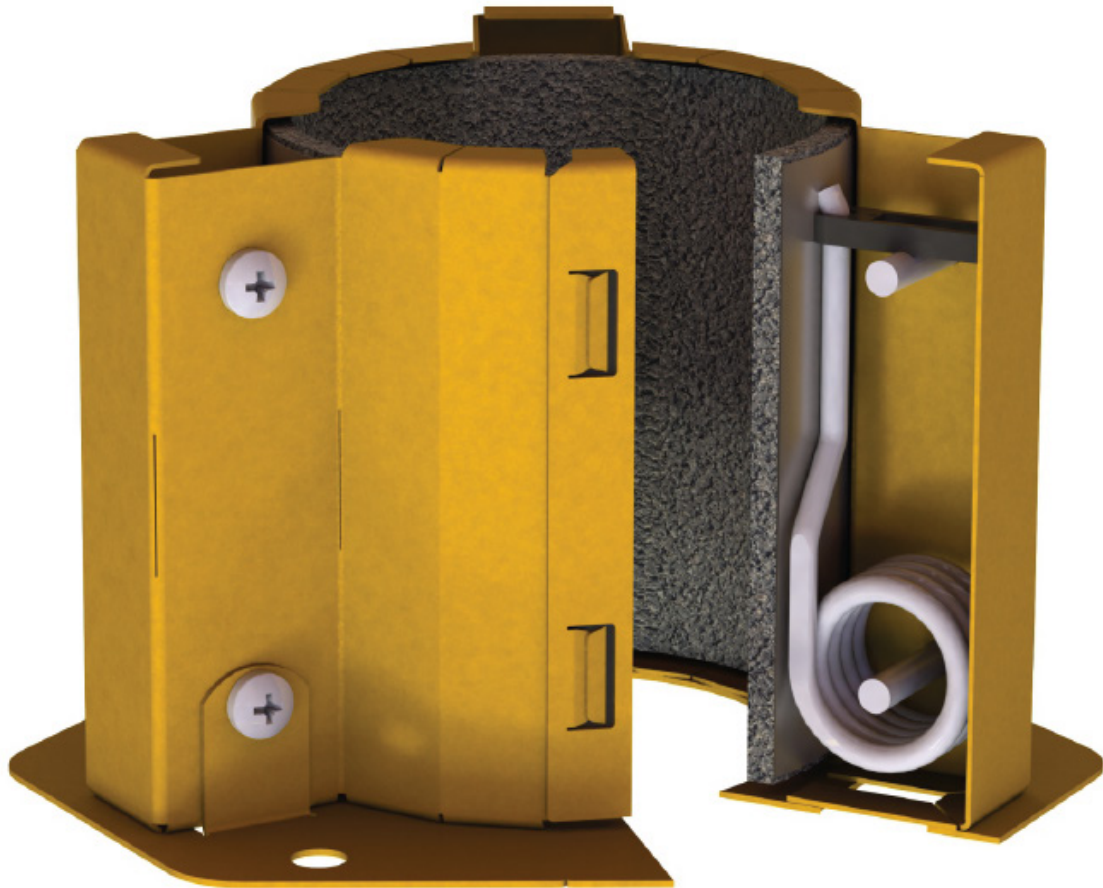


Table 1

Element	Fixing (minimum size)
13mm and 16mm Plasterboard lined wall	M4 16-23mm Steel Expandable Anchor
10mm and greater FIRECRUNCH and Multiboard Board lined wall	M4 16-23mm Steel Expandable Anchor
75mm Hebel PowerPanel wall	14g-10 65mm Hex Head Screw
78mm SpeedPanel wall	14g-10 65mm Hex Head Screw
Concrete or Masonry wall	5.0mm x 30mm Steel Concrete Screw Bolt
Concrete slab	5.0 x 30mm Steel Concrete Screw Anchor 5.0 x 32mm Steel Mushroom Head Spike 6.0 x 35mm Steel Wedge Anchor 6.5 x 35mm Steel Sleeve Anchor